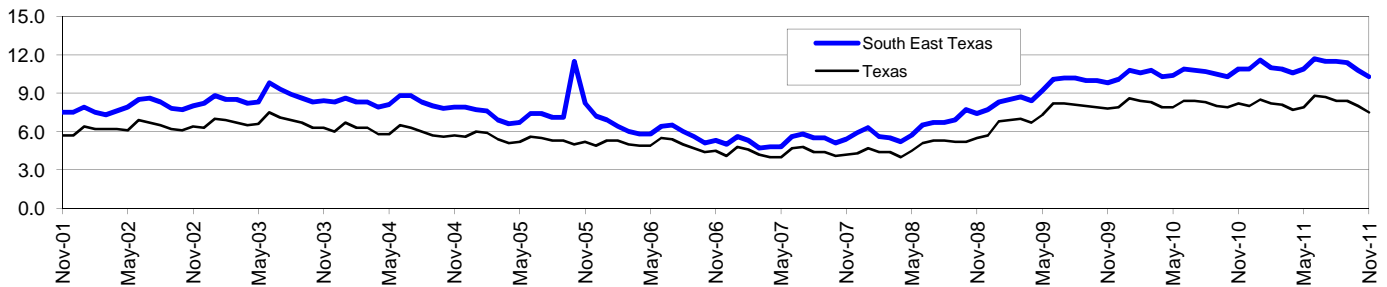


South East Texas Workforce Development Area*

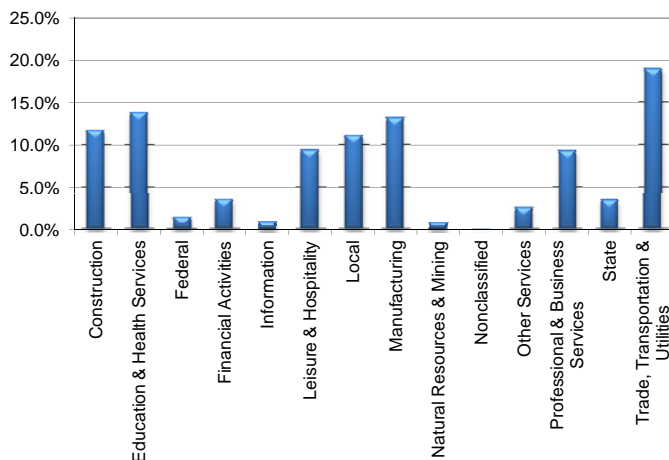
November 2011

South East Texas WDA					Texas				
	CLF	Employed	Unemployed	Rate		CLF	Employed	Unemployed	Rate
Nov-11	189,325	169,771	19,554	10.3	Nov-11	12,344,777	11,423,828	920,949	7.5
Oct-11	190,503	169,985	20,518	10.8	Oct-11	12,366,963	11,378,368	988,595	8.0
Nov-10	188,936	168,401	20,535	10.9	Nov-10	12,212,305	11,207,071	1,005,234	8.2

Historical Unemployment Rates



South East Texas WDA Industry Composition 2nd Quarter 2011



Total WDA Claims

	Nov-11	Oct-11	Nov-10	OTY
Initial	2,225	2,258	2,728	-503
Continued	9,940	8,784	11,105	-1,165
Continued Claims for the Week of the 12th				
Continued	3,568	3,337	3,894	-326

Texas Unemployment Insurance Claims Filed

	Nov-11	Oct-11	Nov-10	OTY
Initial	86,141	85,204	85,666	475
Continued	785,704	807,989	887,513	-101,809
Continued Claims for the Week of the 12th				
Continued	170,215	174,199	190,017	-19,802

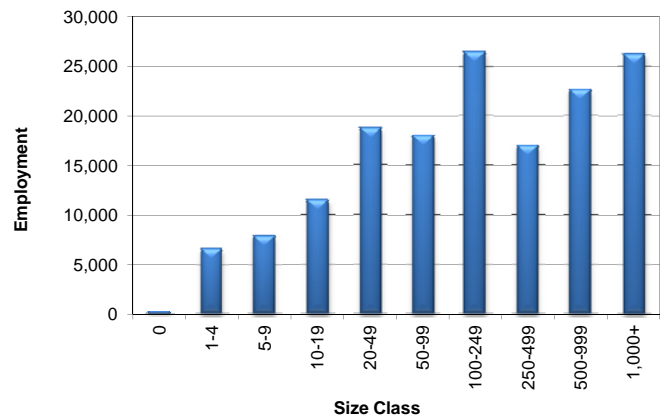
South East Texas WDA Average Weekly Wage

	South East Tx	WDA Qtr. Chg.	Texas
2nd Quarter 2011	\$850.71	-\$37.86	\$899.79
1st Quarter 2011	\$888.57	WDA OTY Chg.	\$944.37
2nd Quarter 2010	\$807.47	\$43.24	\$863.86

NAICS Covered Employment Quarterly Data 2nd Quarter 2011

SUPER SECTOR	Employment	Change	
		Quarter	Year
Construction	18,205	-322	1,286
Education & Health Services	21,423	-7	-430
Federal	2,183	-16	-433
Financial Activities	5,497	-8	42
Information	1,385	-31	-79
Leisure & Hospitality	14,597	481	71
Local	17,279	-74	-1,487
Manufacturing	20,424	397	926
Natural Resources & Mining	1,287	32	-11
Nonclassified	31	4	2
Other Services	3,947	94	57
Professional & Business Services	14,267	558	1,143
State	5,452	74	142
Trade, Transportation & Utilities	29,311	382	81
TOTAL	155,288	1,564	1,310

Size Class Employment Composition 2nd Quarter 2011



*Counties in WDA: Hardin, Jefferson, & Orange

Available at <http://www.tracer2.com/>